

I, Henry Awmack
700-700 West Pender Street
Vancouver, B.C.
of 604-688-9806 ext. 110
Phone 604-688-9806 ext. 110
make oath and say that:

Office Date Stamp

1. I am the owner, or agent of the owner, of the mineral claim(s) to which reference is made herein.
2. I have done, or caused to be done, work, on the following mineral claim(s): (Here list claims on which work was actually done by number and name)

Yukon Gold Central Group (see attached)

situated at White River Claim sheet No. 1150/4
in the Whitehorse Mining District, to the value of at least 28,142 dollars,
since the 1st day of September 20 09,

to represent the following mineral claims under the authority of Grouping Certificate No. _____.
(Here list claims to be renewed in numerical order, by grant number and claim name, showing renewal period requested).

(see attached)

Central Block

3. The following is a detailed statement of such work: (Set out full particulars of the work done indicating dates work commenced and ended in the twelve months in which such work is required to be done as shown by Section 56).

Soil sampling and reconnaissance geological mapping from September 16-24, 2009.

Sworn before me at Vancouver this 16th day of December 20 09.
[Signature] Notary Public
[Signature] Owner or Authorized Agent

Access to Information and Protection of Privacy Act

The personal information requested on this form is collected under the authority of and used for the purpose of administering the *Quartz Mining Act*. Questions about the collection and use of this information can be directed to the Mining Records Office, Mineral Resources, Department of Energy, Mines and Resources, Yukon Government, Box 2703, Whitehorse, Yukon Territory, Y1A 2C6 (867) 667-3190

Central Block

[illegible]

Central Block

GrantNum	ClaimName	ClaimNbr	ClaimOwner	Record Date	ExpiryDate	Renewal Period
YC98552	MGK	52	Habanero Resources Inc. - 100%.	6/19/2009	6/19/2010	1 year
YC98553	MGK	53	Habanero Resources Inc. - 100%.	6/19/2009	6/19/2010	1 year
YC98554	MGK	54	Habanero Resources Inc. - 100%.	6/19/2009	6/19/2010	1 year
YC98555	MGK	55	Habanero Resources Inc. - 100%.	6/19/2009	6/19/2010	1 year
YC98556	MGK	56	Habanero Resources Inc. - 100%.	6/19/2009	6/19/2010	1 year
YC98557	MGK	57	0859842 BC Ltd. - 100%.	6/19/2009	6/19/2010	1 year
YC98558	MGK	58	0859842 BC Ltd. - 100%.	6/19/2009	6/19/2010	1 year
YC98559	MGK	59	0859842 BC Ltd. - 100%.	6/19/2009	6/19/2010	1 year
YC98560	MGK	60	0859842 BC Ltd. - 100%.	6/19/2009	6/19/2010	1 year
YC98561	MGK	61	0859842 BC Ltd. - 100%.	6/19/2009	6/19/2010	1 year
YC98562	MGK	62	0859842 BC Ltd. - 100%.	6/19/2009	6/19/2010	1 year
YC98563	MGK	63	0859842 BC Ltd. - 100%.	6/19/2009	6/19/2010	1 year
YC98564	MGK	64	0859842 BC Ltd. - 100%.	6/19/2009	6/19/2010	1 year
YC98565	MGK	65	0859842 BC Ltd. - 100%.	6/19/2009	6/19/2010	1 year
YC98566	MGK	66	0859842 BC Ltd. - 100%.	6/19/2009	6/19/2010	1 year
YC98567	MGK	67	0859842 BC Ltd. - 100%.	6/19/2009	6/19/2010	1 year
YC98568	MGK	68	0859842 BC Ltd. - 100%.	6/19/2009	6/19/2010	1 year
YC98569	MGK	69	0859842 BC Ltd. - 100%.	6/19/2009	6/19/2010	1 year
YC98570	MGK	70	0859842 BC Ltd. - 100%.	6/19/2009	6/19/2010	1 year
YC98571	MGK	71	0859842 BC Ltd. - 100%.	6/19/2009	6/19/2010	1 year
YC98572	MGK	72	0859842 BC Ltd. - 100%.	6/19/2009	6/19/2010	1 year
YC98573	MGK	73	0859842 BC Ltd. - 100%.	6/19/2009	6/19/2010	1 year
YC98574	MGK	74	0859842 BC Ltd. - 100%.	6/19/2009	6/19/2010	1 year
YC98575	MGK	75	0859842 BC Ltd. - 100%.	6/19/2009	6/19/2010	1 year
YC98576	MGK	76	0859842 BC Ltd. - 100%.	6/19/2009	6/19/2010	1 year
YC98577	MGK	77	0859842 BC Ltd. - 100%.	6/19/2009	6/19/2010	1 year
YC98578	MGK	78	0859842 BC Ltd. - 100%.	6/19/2009	6/19/2010	1 year
YC98579	MGK	79	0859842 BC Ltd. - 100%.	6/19/2009	6/19/2010	1 year
YC98580	MGK	80	0859842 BC Ltd. - 100%.	6/19/2009	6/19/2010	1 year
YC98581	MGK	81	0859842 BC Ltd. - 100%.	6/19/2009	6/19/2010	1 year
YC98582	MGK	82	0859842 BC Ltd. - 100%.	6/19/2009	6/19/2010	1 year
YC98583	MGK	83	0859842 BC Ltd. - 100%.	6/19/2009	6/19/2010	1 year
YC98584	MGK	84	0859842 BC Ltd. - 100%.	6/19/2009	6/19/2010	1 year
YC98585	MGK	85	0859842 BC Ltd. - 100%.	6/19/2009	6/19/2010	1 year
YC98586	MGK	86	0859842 BC Ltd. - 100%.	6/19/2009	6/19/2010	1 year
YC98587	MGK	87	0859842 BC Ltd. - 100%.	6/19/2009	6/19/2010	1 year
YC98588	MGK	88	0859842 BC Ltd. - 100%.	6/19/2009	6/19/2010	1 year
YC98589	MGK	89	0859842 BC Ltd. - 100%.	6/19/2009	6/19/2010	1 year
YC98590	MGK	90	0859842 BC Ltd. - 100%.	6/19/2009	6/19/2010	1 year
YC98591	MGK	91	0859842 BC Ltd. - 100%.	6/19/2009	6/19/2010	1 year
YC98592	MGK	92	0859842 BC Ltd. - 100%.	6/19/2009	6/19/2010	1 year
YC98593	MGK	93	0859842 BC Ltd. - 100%.	6/19/2009	6/19/2010	1 year
YC98594	MGK	94	0859842 BC Ltd. - 100%.	6/19/2009	6/19/2010	1 year
YC98595	MGK	95	0859842 BC Ltd. - 100%.	6/19/2009	6/19/2010	1 year
YC98596	MGK	96	0859842 BC Ltd. - 100%.	6/19/2009	6/19/2010	1 year
YC98597	MGK	97	0859842 BC Ltd. - 100%.	6/19/2009	6/19/2010	1 year
YC98598	MGK	98	0859842 BC Ltd. - 100%.	6/19/2009	6/19/2010	1 year
YC98599	MGK	99	0859842 BC Ltd. - 100%.	6/19/2009	6/19/2010	1 year
YC98600	MGK	100	0859842 BC Ltd. - 100%.	6/19/2009	6/19/2010	1 year
YC98931	MGK	101	0859842 BC Ltd. - 100%.	6/19/2009	6/19/2010	1 year
YC98932	MGK	102	0859842 BC Ltd. - 100%.	6/19/2009	6/19/2010	1 year

Central Block

GrantNum	ClaimName	ClaimNbr	ClaimOwner	Record Date	ExpiryDate	Renewal Period
YC98933	MGK	103	0859842 BC Ltd. - 100%.	6/19/2009	6/19/2010	1 year
YC98934	MGK	104	0859842 BC Ltd. - 100%.	6/19/2009	6/19/2010	1 year
YC98935	MGK	105	0859842 BC Ltd. - 100%.	6/19/2009	6/19/2010	1 year
YC98936	MGK	106	0859842 BC Ltd. - 100%.	6/19/2009	6/19/2010	1 year
YC98937	MGK	107	0859842 BC Ltd. - 100%.	6/19/2009	6/19/2010	1 year
YC98938	MGK	108	0859844 BC Ltd. - 100%.	6/19/2009	6/19/2010	1 year
YC98939	MGK	109	0859844 BC Ltd. - 100%.	6/19/2009	6/19/2010	1 year
YC98940	MGK	110	0859844 BC Ltd. - 100%.	6/19/2009	6/19/2010	1 year
YC98941	MGK	111	0859844 BC Ltd. - 100%.	6/19/2009	6/19/2010	1 year
YC98942	MGK	112	0859844 BC Ltd. - 100%.	6/19/2009	6/19/2010	1 year
YC98943	MGK	113	0859844 BC Ltd. - 100%.	6/19/2009	6/19/2010	1 year
YC98944	MGK	114	0859844 BC Ltd. - 100%.	6/19/2009	6/19/2010	1 year
YC98945	MGK	115	0859844 BC Ltd. - 100%.	6/19/2009	6/19/2010	1 year
YC98946	MGK	116	0859844 BC Ltd. - 100%.	6/19/2009	6/19/2010	1 year
YC98947	MGK	117	0859844 BC Ltd. - 100%.	6/19/2009	6/19/2010	1 year
YC98948	MGK	118	0859844 BC Ltd. - 100%.	6/19/2009	6/19/2010	1 year
YC98949	MGK	119	0859844 BC Ltd. - 100%.	6/19/2009	6/19/2010	1 year
YC98950	MGK	120	0859844 BC Ltd. - 100%.	6/19/2009	6/19/2010	1 year
YC98951	MGK	121	0859844 BC Ltd. - 100%.	6/19/2009	6/19/2010	1 year
YC98952	MGK	122	0859844 BC Ltd. - 100%.	6/19/2009	6/19/2010	1 year
YC98953	MGK	123	0859844 BC Ltd. - 100%.	6/19/2009	6/19/2010	1 year
YC98954	MGK	124	0859844 BC Ltd. - 100%.	6/19/2009	6/19/2010	1 year
YC98955	MGK	125	0859844 BC Ltd. - 100%.	6/19/2009	6/19/2010	1 year
YC98956	MGK	126	0859844 BC Ltd. - 100%.	6/19/2009	6/19/2010	1 year
YC98957	MGK	127	0859844 BC Ltd. - 100%.	6/19/2009	6/19/2010	1 year
YC98958	MGK	128	0859844 BC Ltd. - 100%.	6/19/2009	6/19/2010	1 year
YC98959	MGK	129	0859844 BC Ltd. - 100%.	6/19/2009	6/19/2010	1 year
YC98960	MGK	130	0859844 BC Ltd. - 100%.	6/19/2009	6/19/2010	1 year
YC98961	MGK	131	0859844 BC Ltd. - 100%.	6/19/2009	6/19/2010	1 year
YC98962	MGK	132	0859844 BC Ltd. - 100%.	6/19/2009	6/19/2010	1 year
YC98963	MGK	133	0859844 BC Ltd. - 100%.	6/19/2009	6/19/2010	1 year
YC98964	MGK	134	0859844 BC Ltd. - 100%.	6/19/2009	6/19/2010	1 year
YC98965	MGK	135	0859844 BC Ltd. - 100%.	6/19/2009	6/19/2010	1 year
YC98966	MGK	136	0859844 BC Ltd. - 100%.	6/19/2009	6/19/2010	1 year
YC98967	MGK	137	0859844 BC Ltd. - 100%.	6/19/2009	6/19/2010	1 year
YC98968	MGK	138	0859844 BC Ltd. - 100%.	6/19/2009	6/19/2010	1 year
YC98969	MGK	139	0859844 BC Ltd. - 100%.	6/19/2009	6/19/2010	1 year
YC98970	MGK	140	0859844 BC Ltd. - 100%.	6/19/2009	6/19/2010	1 year
YC98971	MGK	141	0859844 BC Ltd. - 100%.	6/19/2009	6/19/2010	1 year
YC98972	MGK	142	0859844 BC Ltd. - 100%.	6/19/2009	6/19/2010	1 year
YC98973	MGK	143	0859844 BC Ltd. - 100%.	6/19/2009	6/19/2010	1 year
YC98974	MGK	144	0859844 BC Ltd. - 100%.	6/19/2009	6/19/2010	1 year
YC98975	MGK	145	0859844 BC Ltd. - 100%.	6/19/2009	6/19/2010	1 year
YC98976	MGK	146	0859844 BC Ltd. - 100%.	6/19/2009	6/19/2010	1 year
YC98977	MGK	147	0859844 BC Ltd. - 100%.	6/19/2009	6/19/2010	1 year
YC98978	MGK	148	0859844 BC Ltd. - 100%.	6/19/2009	6/19/2010	1 year
YC98979	MGK	149	0859844 BC Ltd. - 100%.	6/19/2009	6/19/2010	1 year
YC98980	MGK	150	0859844 BC Ltd. - 100%.	6/19/2009	6/19/2010	1 year
YC98981	MGK	151	0859844 BC Ltd. - 100%.	6/19/2009	6/19/2010	1 year
YC98982	MGK	152	0859844 BC Ltd. - 100%.	6/19/2009	6/19/2010	1 year
YC98983	MGK	153	0859844 BC Ltd. - 100%.	6/19/2009	6/19/2010	1 year

Central Block

GrantNum	ClaimName	ClaimNbr	ClaimOwner	Record Date	ExpiryDate	Renewal Period
YC98984	MGK	154	0859844 BC Ltd. - 100%.	6/19/2009	6/19/2010	1 year
YC98985	MGK	155	0859844 BC Ltd. - 100%.	6/19/2009	6/19/2010	1 year
YC98986	MGK	156	0859844 BC Ltd. - 100%.	6/19/2009	6/19/2010	1 year
YC98987	MGK	157	0859844 BC Ltd. - 100%.	6/19/2009	6/19/2010	1 year
YC98988	MGK	158	0859844 BC Ltd. - 100%.	6/19/2009	6/19/2010	1 year
YC98989	MGK	159	0859844 BC Ltd. - 100%.	6/19/2009	6/19/2010	1 year
YC98990	MGK	160	0859844 BC Ltd. - 100%.	6/19/2009	6/19/2010	1 year
YC98991	MGK	161	0859844 BC Ltd. - 100%.	6/19/2009	6/19/2010	1 year
YC98992	MGK	162	0859844 BC Ltd. - 100%.	6/19/2009	6/19/2010	1 year
YC98993	MGK	163	0859844 BC Ltd. - 100%.	6/19/2009	6/19/2010	1 year
YC98994	MGK	164	0859844 BC Ltd. - 100%.	6/19/2009	6/19/2010	1 year
YC98995	MGK	165	0859844 BC Ltd. - 100%.	6/19/2009	6/19/2010	1 year
YC98996	MGK	166	0859844 BC Ltd. - 100%.	6/19/2009	6/19/2010	1 year
YC98997	MGK	167	0859844 BC Ltd. - 100%.	6/19/2009	6/19/2010	1 year
YC98998	MGK	168	0859844 BC Ltd. - 100%.	6/19/2009	6/19/2010	1 year
YC98999	MGK	169	0859844 BC Ltd. - 100%.	6/19/2009	6/19/2010	1 year
YC99000	MGK	170	0859844 BC Ltd. - 100%.	6/19/2009	6/19/2010	1 year
YC99001	MGK	171	0859844 BC Ltd. - 100%.	6/19/2009	6/19/2010	1 year
YC99002	MGK	172	0859844 BC Ltd. - 100%.	6/19/2009	6/19/2010	1 year
YC99003	MGK	173	0859844 BC Ltd. - 100%.	6/19/2009	6/19/2010	1 year
YC99004	MGK	174	0859844 BC Ltd. - 100%.	6/19/2009	6/19/2010	1 year
YC99005	MGK	175	0859844 BC Ltd. - 100%.	6/19/2009	6/19/2010	1 year
YC99006	MGK	176	0859844 BC Ltd. - 100%.	6/19/2009	6/19/2010	1 year
YC99007	MGK	177	0859844 BC Ltd. - 100%.	6/19/2009	6/19/2010	1 year
YC99008	MGK	178	0859844 BC Ltd. - 100%.	6/19/2009	6/19/2010	1 year
YC99009	MGK	179	0859844 BC Ltd. - 100%.	6/19/2009	6/19/2010	1 year
YC99010	MGK	180	0859844 BC Ltd. - 100%.	6/19/2009	6/19/2010	1 year
YC99011	MGK	181	0859844 BC Ltd. - 100%.	6/19/2009	6/19/2010	1 year
YC99012	MGK	182	0859844 BC Ltd. - 100%.	6/19/2009	6/19/2010	1 year
YC99013	MGK	183	0859844 BC Ltd. - 100%.	6/19/2009	6/19/2010	1 year
YC99014	MGK	184	0859844 BC Ltd. - 100%.	6/19/2009	6/19/2010	1 year
YC99015	MGK	185	0859844 BC Ltd. - 100%.	6/19/2009	6/19/2010	1 year
YC99016	MGK	186	0859844 BC Ltd. - 100%.	6/19/2009	6/19/2010	1 year
YC99017	MGK	187	0859844 BC Ltd. - 100%.	6/19/2009	6/19/2010	1 year
YC99018	MGK	188	0859844 BC Ltd. - 100%.	6/19/2009	6/19/2010	1 year
YC99019	MGK	189	0859844 BC Ltd. - 100%.	6/19/2009	6/19/2010	1 year
YC99020	MGK	190	0859844 BC Ltd. - 100%.	6/19/2009	6/19/2010	1 year
YC99021	MGK	191	0859844 BC Ltd. - 100%.	6/19/2009	6/19/2010	1 year
YC99022	MGK	192	0859844 BC Ltd. - 100%.	6/19/2009	6/19/2010	1 year
YC99023	MGK	193	0859844 BC Ltd. - 100%.	6/19/2009	6/19/2010	1 year
YC99024	MGK	194	0859844 BC Ltd. - 100%.	6/19/2009	6/19/2010	1 year
YC99025	MGK	195	0859844 BC Ltd. - 100%.	6/19/2009	6/19/2010	1 year
YC99026	MGK	196	0859844 BC Ltd. - 100%.	6/19/2009	6/19/2010	1 year
YC99027	MGK	197	0859844 BC Ltd. - 100%.	6/19/2009	6/19/2010	1 year
YC99028	MGK	198	0859844 BC Ltd. - 100%.	6/19/2009	6/19/2010	1 year
YC99029	MGK	199	0859844 BC Ltd. - 100%.	6/19/2009	6/19/2010	1 year
YC99030	MGK	200	0859844 BC Ltd. - 100%.	6/19/2009	6/19/2010	1 year
YC99031	MGK	201	0859844 BC Ltd. - 100%.	6/19/2009	6/19/2010	1 year
YC99032	MGK	202	0859844 BC Ltd. - 100%.	6/19/2009	6/19/2010	1 year
YC99033	MGK	203	0859844 BC Ltd. - 100%.	6/19/2009	6/19/2010	1 year
YC99034	MGK	204	0859844 BC Ltd. - 100%.	6/19/2009	6/19/2010	1 year

Central Block

GrantNum	ClaimName	ClaimNbr	ClaimOwner	Record Date	ExpiryDate	Renewal Period
YC99035	MGK	205	0859844 BC Ltd. - 100%.	6/19/2009	6/19/2010	1 year
YC99036	MGK	206	0859844 BC Ltd. - 100%.	6/19/2009	6/19/2010	1 year
YC99037	MGK	207	0859844 BC Ltd. - 100%.	6/19/2009	6/19/2010	1 year
YC99038	MGK	208	0859844 BC Ltd. - 100%.	6/19/2009	6/19/2010	1 year
YC99039	MGK	209	0859844 BC Ltd. - 100%.	6/19/2009	6/19/2010	1 year
YC99040	MGK	210	0859844 BC Ltd. - 100%.	6/19/2009	6/19/2010	1 year
YC99041	MGK	211	0859844 BC Ltd. - 100%.	6/19/2009	6/19/2010	1 year
YC99042	MGK	212	0859844 BC Ltd. - 100%.	6/19/2009	6/19/2010	1 year
YC99043	MGK	213	0859844 BC Ltd. - 100%.	6/19/2009	6/19/2010	1 year
YC99044	MGK	214	0859844 BC Ltd. - 100%.	6/19/2009	6/19/2010	1 year
YC99045	MGK	215	0859844 BC Ltd. - 100%.	6/19/2009	6/19/2010	1 year
YC99046	MGK	216	MGK Consulting Inc. - 100%.	6/19/2009	6/19/2010	1 year
YC99047	MGK	217	MGK Consulting Inc. - 100%.	6/19/2009	6/19/2010	1 year
YC99048	MGK	218	Micron Eviro Systems Unc. - 100%.	6/19/2009	6/19/2010	1 year
YC99049	MGK	219	Micron Eviro Systems Unc. - 100%.	6/19/2009	6/19/2010	1 year
YC99050	MGK	220	Micron Eviro Systems Unc. - 100%.	6/19/2009	6/19/2010	1 year
YC99051	MGK	221	Micron Eviro Systems Unc. - 100%.	6/19/2009	6/19/2010	1 year
YC99052	MGK	222	Micron Eviro Systems Unc. - 100%.	6/19/2009	6/19/2010	1 year
YC99053	MGK	223	Micron Eviro Systems Unc. - 100%.	6/19/2009	6/19/2010	1 year

I, Henry Awmack
700-700 West Pender Street
of Vancouver, B.C.
Phone 604-688-9806 ext. 110
make oath and say that:



1. I am the owner, or agent of the owner, of the mineral claim(s) to which reference is made herein.
2. I have done, or caused to be done, work, on the following mineral claim(s): (Here list claims on which work was actually done by number and name)

Yukon Gold West Group (see attached)

situated at White River Claim sheet No. 115N/1
in the Dawson Mining District, to the value of at least 15,251 dollars,
since the 1st day of September 20 09,
to represent the following mineral claims under the authority of Grouping Certificate No. _____.
(Here list claims to be renewed in numerical order, by grant number and claim name, showing renewal period requested).

(see attached)

West Block

3. The following is a detailed statement of such work: (Set out full particulars of the work done indicating dates work commenced and ended in the twelve months in which such work is required to be done as shown by Section 56).

Soil sampling and reconnaissance geological mapping from September 16-24, 2009.

Sworn before me at Vancouver this 16th day of December 20 09.
[Signature] Notary Public
[Signature] Owner or Authorized Agent

Access to Information and Protection of Privacy Act

The personal information requested on this form is collected under the authority of and used for the purpose of administering the *Quartz Mining Act*. Questions about the collection and use of this information can be directed to the Mining Records Office, Mineral Resources, Department of Energy, Mines and Resources, Yukon Government, Box 2703, Whitehorse, Yukon Territory, Y1A 2C6 (867) 667-3190

West Block

GrantNum	ClaimName	ClaimNbr	ClaimOwner	Record Date	ClaimExpiryDate	Renewal Period
YC99241	MGK	501	0858631 BC Ltd - 100%.	6/18/2009	6/18/2010	1 year
YC99242	MGK	502	0858631 BC Ltd - 100%.	6/18/2009	6/18/2010	1 year
YC99243	MGK	503	0858631 BC Ltd - 100%.	6/18/2009	6/18/2010	1 year
YC99244	MGK	504	0858631 BC Ltd - 100%.	6/18/2009	6/18/2010	1 year
YC99245	MGK	505	0858631 BC Ltd - 100%.	6/18/2009	6/18/2010	1 year
YC99246	MGK	506	0858631 BC Ltd - 100%.	6/18/2009	6/18/2010	1 year
YC99247	MGK	507	0858631 BC Ltd - 100%.	6/18/2009	6/18/2010	1 year
YC99248	MGK	508	0858631 BC Ltd - 100%.	6/18/2009	6/18/2010	1 year
YC99249	MGK	509	MGK Consulting Inc. - 100%.	6/18/2009	6/18/2010	1 year
YC99250	MGK	510	MGK Consulting Inc. - 100%.	6/18/2009	6/18/2010	1 year
YC99251	MGK	511	MGK Consulting Inc. - 100%.	6/18/2009	6/18/2010	1 year
YC99252	MGK	512	MGK Consulting Inc. - 100%.	6/18/2009	6/18/2010	1 year
YC99253	MGK	513	0858631 BC Ltd - 100%.	6/18/2009	6/18/2010	1 year
YC99254	MGK	514	0858631 BC Ltd - 100%.	6/18/2009	6/18/2010	1 year
YC99255	MGK	515	0858631 BC Ltd - 100%.	6/18/2009	6/18/2010	1 year
YC99256	MGK	516	0858631 BC Ltd - 100%.	6/18/2009	6/18/2010	1 year
YC99257	MGK	517	0858631 BC Ltd - 100%.	6/18/2009	6/18/2010	1 year
YC99258	MGK	518	0858631 BC Ltd - 100%.	6/18/2009	6/18/2010	1 year
YC99259	MGK	519	0858631 BC Ltd - 100%.	6/18/2009	6/18/2010	1 year
YC99260	MGK	520	0858631 BC Ltd - 100%.	6/18/2009	6/18/2010	1 year
YC99261	MGK	521	0858631 BC Ltd - 100%.	6/18/2009	6/18/2010	1 year
YC99262	MGK	522	0858631 BC Ltd - 100%.	6/18/2009	6/18/2010	1 year
YC99263	MGK	523	0858631 BC Ltd - 100%.	6/18/2009	6/18/2010	1 year
YC99264	MGK	524	0858631 BC Ltd - 100%.	6/18/2009	6/18/2010	1 year
YC99265	MGK	525	0858631 BC Ltd - 100%.	6/18/2009	6/18/2010	1 year
YC99266	MGK	526	0858631 BC Ltd - 100%.	6/18/2009	6/18/2010	1 year
YC99267	MGK	527	0858631 BC Ltd - 100%.	6/18/2009	6/18/2010	1 year
YC99268	MGK	528	0858631 BC Ltd - 100%.	6/18/2009	6/18/2010	1 year
YC99269	MGK	529	0858631 BC Ltd - 100%.	6/18/2009	6/18/2010	1 year
YC99270	MGK	530	0858631 BC Ltd - 100%.	6/18/2009	6/18/2010	1 year
YC99271	MGK	531	0858631 BC Ltd - 100%.	6/18/2009	6/18/2010	1 year
YC99272	MGK	532	0858631 BC Ltd - 100%.	6/18/2009	6/18/2010	1 year
YC99273	MGK	533	0858631 BC Ltd - 100%.	6/18/2009	6/18/2010	1 year
YC99274	MGK	534	0858631 BC Ltd - 100%.	6/18/2009	6/18/2010	1 year
YC99275	MGK	535	0858631 BC Ltd - 100%.	6/18/2009	6/18/2010	1 year
YC99276	MGK	536	MGK Consulting Inc. - 100%.	6/18/2009	6/18/2010	1 year
YC99277	MGK	537	0858631 BC Ltd - 100%.	6/18/2009	6/18/2010	1 year
YC99278	MGK	538	MGK Consulting Inc. - 100%.	6/18/2009	6/18/2010	1 year
YC99279	MGK	539	0858631 BC Ltd - 100%.	6/18/2009	6/18/2010	1 year
YC99280	MGK	540	MGK Consulting Inc. - 100%.	6/18/2009	6/18/2010	1 year
YC99281	MGK	541	0858631 BC Ltd - 100%.	6/18/2009	6/18/2010	1 year
YC99282	MGK	542	MGK Consulting Inc. - 100%.	6/18/2009	6/18/2010	1 year
YC99283	MGK	543	0858631 BC Ltd - 100%.	6/18/2009	6/18/2010	1 year
YC99284	MGK	544	MGK Consulting Inc. - 100%.	6/18/2009	6/18/2010	1 year
YC99285	MGK	545	0858631 BC Ltd - 100%.	6/18/2009	6/18/2010	1 year
YC99286	MGK	546	MGK Consulting Inc. - 100%.	6/18/2009	6/18/2010	1 year
YC99287	MGK	547	0858631 BC Ltd - 100%.	6/18/2009	6/18/2010	1 year
YC99288	MGK	548	MGK Consulting Inc. - 100%.	6/18/2009	6/18/2010	1 year
YC99289	MGK	549	MGK Consulting Inc. - 100%.	6/18/2009	6/18/2010	1 year
YC99290	MGK	550	MGK Consulting Inc. - 100%.	6/18/2009	6/18/2010	1 year
YC99291	MGK	551	0858631 BC Ltd - 100%.	6/18/2009	6/18/2010	1 year
YC99292	MGK	552	MGK Consulting Inc. - 100%.	6/18/2009	6/18/2010	1 year

West Block

GrantNum	ClaimName	ClaimNbr	ClaimOwner	Record Date	ClaimExpiryDate	Renewal Period
YC99293	MGK	553	0858631 BC Ltd - 100%.	6/18/2009	6/18/2010	1 year
YC99294	MGK	554	MGK Consulting Inc. - 100%.	6/18/2009	6/18/2010	1 year
YC99295	MGK	555	0858631 BC Ltd - 100%.	6/18/2009	6/18/2010	1 year
YC99296	MGK	556	MGK Consulting Inc. - 100%.	6/18/2009	6/18/2010	1 year
YC99297	MGK	557	MGK Consulting Inc. - 100%.	6/18/2009	6/18/2010	1 year
YC99298	MGK	558	MGK Consulting Inc. - 100%.	6/18/2009	6/18/2010	1 year
YC99299	MGK	559	MGK Consulting Inc. - 100%.	6/18/2009	6/18/2010	1 year
YC99300	MGK	560	MGK Consulting Inc. - 100%.	6/18/2009	6/18/2010	1 year
YC99301	MGK	561	MGK Consulting Inc. - 100%.	6/18/2009	6/18/2010	1 year
YC99302	MGK	562	MGK Consulting Inc. - 100%.	6/18/2009	6/18/2010	1 year
YC99303	MGK	563	MGK Consulting Inc. - 100%.	6/18/2009	6/18/2010	1 year
YC99304	MGK	564	MGK Consulting Inc. - 100%.	6/18/2009	6/18/2010	1 year
YC99305	MGK	565	MGK Consulting Inc. - 100%.	6/18/2009	6/18/2010	1 year
YC99306	MGK	566	MGK Consulting Inc. - 100%.	6/18/2009	6/18/2010	1 year
YC99307	MGK	567	MGK Consulting Inc. - 100%.	6/18/2009	6/18/2010	1 year
YC99308	MGK	568	MGK Consulting Inc. - 100%.	6/18/2009	6/18/2010	1 year
YC99309	MGK	569	MGK Consulting Inc. - 100%.	6/18/2009	6/18/2010	1 year
YC99310	MGK	570	MGK Consulting Inc. - 100%.	6/18/2009	6/18/2010	1 year
YC99311	MGK	571	MGK Consulting Inc. - 100%.	6/18/2009	6/18/2010	1 year
YC99312	MGK	572	MGK Consulting Inc. - 100%.	6/18/2009	6/18/2010	1 year
YC99313	MGK	573	MGK Consulting Inc. - 100%.	6/18/2009	6/18/2010	1 year
YC99314	MGK	574	MGK Consulting Inc. - 100%.	6/18/2009	6/18/2010	1 year
YC99315	MGK	575	MGK Consulting Inc. - 100%.	6/18/2009	6/18/2010	1 year
YC99316	MGK	576	MGK Consulting Inc. - 100%.	6/18/2009	6/18/2010	1 year
YC99317	MGK	577	MGK Consulting Inc. - 100%.	6/18/2009	6/18/2010	1 year
YC99318	MGK	578	MGK Consulting Inc. - 100%.	6/18/2009	6/18/2010	1 year
YC99319	MGK	579	Habanero Resources Inc. - 100%	6/18/2009	6/18/2010	1 year
YC99320	MGK	580	Habanero Resources Inc. - 100%	6/18/2009	6/18/2010	1 year
YC99321	MGK	581	Habanero Resources Inc. - 100%	6/18/2009	6/18/2010	1 year
YC99322	MGK	582	Habanero Resources Inc. - 100%	6/18/2009	6/18/2010	1 year
YC99323	MGK	583	Habanero Resources Inc. - 100%	6/18/2009	6/18/2010	1 year
YC99324	MGK	584	Habanero Resources Inc. - 100%	6/18/2009	6/18/2010	1 year
YC99325	MGK	585	Habanero Resources Inc. - 100%	6/18/2009	6/18/2010	1 year
YC99326	MGK	586	Habanero Resources Inc. - 100%	6/18/2009	6/18/2010	1 year
YC99327	MGK	587	Habanero Resources Inc. - 100%	6/18/2009	6/18/2010	1 year
YC99328	MGK	588	Habanero Resources Inc. - 100%	6/18/2009	6/18/2010	1 year
YC99329	MGK	589	Habanero Resources Inc. - 100%	6/18/2009	6/18/2010	1 year
YC99330	MGK	590	Habanero Resources Inc. - 100%	6/18/2009	6/18/2010	1 year
YC99331	MGK	591	Habanero Resources Inc. - 100%	6/18/2009	6/18/2010	1 year
YC99332	MGK	592	Habanero Resources Inc. - 100%	6/18/2009	6/18/2010	1 year
YC99333	MGK	593	Habanero Resources Inc. - 100%	6/18/2009	6/18/2010	1 year
YC99334	MGK	594	Habanero Resources Inc. - 100%	6/18/2009	6/18/2010	1 year
YC99335	MGK	595	Habanero Resources Inc. - 100%	6/18/2009	6/18/2010	1 year
YC99336	MGK	596	Habanero Resources Inc. - 100%	6/18/2009	6/18/2010	1 year
YC99337	MGK	597	Habanero Resources Inc. - 100%	6/18/2009	6/18/2010	1 year
YC99338	MGK	598	Habanero Resources Inc. - 100%	6/18/2009	6/18/2010	1 year
YC99339	MGK	599	Habanero Resources Inc. - 100%	6/18/2009	6/18/2010	1 year
YC99340	MGK	600	Habanero Resources Inc. - 100%	6/18/2009	6/18/2010	1 year
YC99341	MGK	601	Habanero Resources Inc. - 100%	6/18/2009	6/18/2010	1 year
YC99342	MGK	602	Habanero Resources Inc. - 100%	6/18/2009	6/18/2010	1 year
YC99343	MGK	603	Habanero Resources Inc. - 100%	6/18/2009	6/18/2010	1 year
YC99344	MGK	604	Habanero Resources Inc. - 100%	6/18/2009	6/18/2010	1 year

West Block

GrantNum	ClaimName	ClaimNbr	ClaimOwner	Record Date	ClaimExpiryDate	Renewal Period
YC99345	MGK	605	Habanero Resources Inc. - 100	6/18/2009	6/18/2010	1 year
YC99346	MGK	606	Habanero Resources Inc. - 100	6/18/2009	6/18/2010	1 year
YC99347	MGK	607	Habanero Resources Inc. - 100	6/18/2009	6/18/2010	1 year
YC99348	MGK	608	Habanero Resources Inc. - 100	6/18/2009	6/18/2010	1 year
YC99349	MGK	609	Habanero Resources Inc. - 100	6/18/2009	6/18/2010	1 year
YC99350	MGK	610	Habanero Resources Inc. - 100	6/18/2009	6/18/2010	1 year
YC99351	MGK	611	Habanero Resources Inc. - 100	6/18/2009	6/18/2010	1 year
YC99352	MGK	612	Habanero Resources Inc. - 100	6/18/2009	6/18/2010	1 year
YC99353	MGK	613	Habanero Resources Inc. - 100	6/18/2009	6/18/2010	1 year
YC99354	MGK	614	Habanero Resources Inc. - 100	6/18/2009	6/18/2010	1 year
YC99355	MGK	615	Habanero Resources Inc. - 100	6/18/2009	6/18/2010	1 year
YC99356	MGK	616	Habanero Resources Inc. - 100	6/18/2009	6/18/2010	1 year
YC99357	MGK	617	Habanero Resources Inc. - 100	6/18/2009	6/18/2010	1 year
YC99358	MGK	618	Habanero Resources Inc. - 100	6/18/2009	6/18/2010	1 year
YC99359	MGK	619	Habanero Resources Inc. - 100	6/18/2009	6/18/2010	1 year
YC99360	MGK	620	Habanero Resources Inc. - 100	6/18/2009	6/18/2010	1 year
YC99361	MGK	621	Habanero Resources Inc. - 100	6/18/2009	6/18/2010	1 year
YC99362	MGK	622	Habanero Resources Inc. - 100	6/18/2009	6/18/2010	1 year

I, Henry Awmack
700-700 West Pender Street
of Vancouver, B.C.
Phone 604-688-9806 ext. 110
make oath and say that:



- I am the owner, or agent of the owner, of the mineral claim(s) to which reference is made herein.
- I have done, or caused to be done, work, on the following mineral claim(s): (Here list claims on which work was actually done by number and name)

Yukon Gold East Group (see attached)

situated at White River Claim sheet No. 1150/4

in the Whitehorse Mining District, to the value of at least 67,895 dollars,

since the 1st day of September 20 09,

to represent the following mineral claims under the authority of Grouping Certificate No. _____.
(Here list claims to be renewed in numerical order, by grant number and claim name, showing renewal period requested).

(see attached)

(East Block)

- The following is a detailed statement of such work: (Set out full particulars of the work done indicating dates work commenced and ended in the twelve months in which such work is required to be done as shown by Section 56).

Soil sampling and reconnaissance geological mapping from September 16-24, 2009.

Sworn before me at Vancouver this 16th day of December 20 09.

[Signature]
Notary Public

[Signature]
Owner or Authorized Agent

Access to Information and Protection of Privacy Act

The personal information requested on this form is collected under the authority of and used for the purpose of administering the *Quartz Mining Act*. Questions about the collection and use of this information can be directed to the Mining Records Office, Mineral Resources, Department of Energy, Mines and Resources, Yukon Government, Box 2703, Whitehorse, Yukon Territory, Y1A 2C6 (867) 667-3190

East Block Assessment

GrantNum	ClaimName	ClaimNbr	ClaimOwner	RecordDate	ClaimExpiryDate	Renewal Period
YC91501	MGK	1061	0854511 BC Ltd. - 100%.	7/3/2009	7/3/2010	1 year
YC91502	MGK	1062	MGK Consulting Inc. - 100%.	7/3/2009	7/3/2010	1 year
YC91503	MGK	1063	MGK Consulting Inc. - 100%.	7/3/2009	7/3/2010	1 year
YC91504	MGK	1064	MGK Consulting Inc. - 100%.	7/3/2009	7/3/2010	1 year
YC91505	MGK	1065	MGK Consulting Inc. - 100%.	7/3/2009	7/3/2010	1 year
YC91506	MGK	1066	MGK Consulting Inc. - 100%.	7/3/2009	7/3/2010	1 year
YC91507	MGK	1067	MGK Consulting Inc. - 100%.	7/3/2009	7/3/2010	1 year
YC91508	MGK	1068	MGK Consulting Inc. - 100%.	7/3/2009	7/3/2010	1 year
YC91509	MGK	1069	MGK Consulting Inc. - 100%.	7/3/2009	7/3/2010	1 year
YC91510	MGK	1070	MGK Consulting Inc. - 100%.	7/3/2009	7/3/2010	1 year
YC91511	MGK	1071	MGK Consulting Inc. - 100%.	7/3/2009	7/3/2010	1 year
YC91512	MGK	1072	MGK Consulting Inc. - 100%.	7/3/2009	7/3/2010	1 year
YC91513	MGK	1073	MGK Consulting Inc. - 100%.	7/3/2009	7/3/2010	1 year
YC91514	MGK	1074	MGK Consulting Inc. - 100%.	7/3/2009	7/3/2010	1 year
YC91515	MGK	1075	MGK Consulting Inc. - 100%.	7/3/2009	7/3/2010	1 year
YC91516	MGK	1076	MGK Consulting Inc. - 100%.	7/3/2009	7/3/2010	1 year
YC91517	MGK	1077	MGK Consulting Inc. - 100%.	7/3/2009	7/3/2010	1 year
YC91518	MGK	1078	MGK Consulting Inc. - 100%.	7/3/2009	7/3/2010	1 year
YC91519	MGK	1079	MGK Consulting Inc. - 100%.	7/3/2009	7/3/2010	1 year
YC91520	MGK	1080	MGK Consulting Inc. - 100%.	7/3/2009	7/3/2010	1 year
YC91521	MGK	1081	MGK Consulting Inc. - 100%.	7/3/2009	7/3/2010	1 year
YC91522	MGK	1082	0854508 BC Ltd - 100%.	7/3/2009	7/3/2010	1 year
YC91523	MGK	1083	0854508 BC Ltd - 100%.	7/3/2009	7/3/2010	1 year
YC91524	MGK	1084	0854508 BC Ltd - 100%.	7/3/2009	7/3/2010	1 year
YC91525	MGK	1085	0854508 BC Ltd - 100%.	7/3/2009	7/3/2010	1 year
YC91526	MGK	1086	Habanero Resources Inc. - 100%.	7/3/2009	7/3/2010	1 year
YC91527	MGK	1087	Habanero Resources Inc. - 100%.	7/3/2009	7/3/2010	1 year
YC91528	MGK	1088	Habanero Resources Inc. - 100%.	7/3/2009	7/3/2010	1 year
YC91529	MGK	1089	Habanero Resources Inc. - 100%.	7/3/2009	7/3/2010	1 year
YC91530	MGK	1090	Habanero Resources Inc. - 100%.	7/3/2009	7/3/2010	1 year
YC91531	MGK	1091	Habanero Resources Inc. - 100%.	7/3/2009	7/3/2010	1 year
YC91532	MGK	1092	0859842 BC Ltd. - 100%.	7/3/2009	7/3/2010	1 year
YC91533	MGK	1093	0854508 BC Ltd - 100%.	7/3/2009	7/3/2010	1 year
YC91534	MGK	1094	0854511 BC Ltd. - 100%.	7/3/2009	7/3/2010	1 year
YC91535	MGK	1095	0854511 BC Ltd. - 100%.	7/3/2009	7/3/2010	1 year
YC91536	MGK	1096	0854511 BC Ltd. - 100%.	7/3/2009	7/3/2010	1 year
YC91537	MGK	1097	0854511 BC Ltd. - 100%.	7/3/2009	7/3/2010	1 year
YC91538	MGK	1098	MGK Consulting Inc. - 100%.	7/3/2009	7/3/2010	1 year
YC91539	MGK	1099	MGK Consulting Inc. - 100%.	7/3/2009	7/3/2010	1 year
YC91540	MGK	1100	MGK Consulting Inc. - 100%.	7/3/2009	7/3/2010	1 year
YC91541	MGK	1101	MGK Consulting Inc. - 100%.	7/3/2009	7/3/2010	1 year
YC91542	MGK	1102	MGK Consulting Inc. - 100%.	7/3/2009	7/3/2010	1 year
YC91543	MGK	1103	MGK Consulting Inc. - 100%.	7/3/2009	7/3/2010	1 year
YC91544	MGK	1104	MGK Consulting Inc. - 100%.	7/3/2009	7/3/2010	1 year
YC91545	MGK	1105	MGK Consulting Inc. - 100%.	7/3/2009	7/3/2010	1 year
YC91546	MGK	1106	MGK Consulting Inc. - 100%.	7/3/2009	7/3/2010	1 year
YC91547	MGK	1107	MGK Consulting Inc. - 100%.	7/3/2009	7/3/2010	1 year
YC91548	MGK	1108	MGK Consulting Inc. - 100%.	7/3/2009	7/3/2010	1 year
YC91549	MGK	1109	MGK Consulting Inc. - 100%.	7/3/2009	7/3/2010	1 year
YC91550	MGK	1110	MGK Consulting Inc. - 100%.	7/3/2009	7/3/2010	1 year
YC91551	MGK	1111	MGK Consulting Inc. - 100%.	7/3/2009	7/3/2010	1 year
YC91552	MGK	1112	MGK Consulting Inc. - 100%.	7/3/2009	7/3/2010	1 year
YC91553	MGK	1113	MGK Consulting Inc. - 100%.	7/3/2009	7/3/2010	1 year
YC91554	MGK	1114	MGK Consulting Inc. - 100%.	7/3/2009	7/3/2010	1 year

East Block Assessment

GrantNum	ClaimName	ClaimNbr	ClaimOwner	RecordDate	ClaimExpiryDate	Renewal Period
YC91555	MGK	1115	MGK Consulting Inc. - 100%.	7/3/2009	7/3/2010	1 year
YC91556	MGK	1116	MGK Consulting Inc. - 100%.	7/3/2009	7/3/2010	1 year
YC91557	MGK	1117	MGK Consulting Inc. - 100%.	7/3/2009	7/3/2010	1 year
YC91558	MGK	1118	0854508 BC Ltd - 100%.	7/3/2009	7/3/2010	1 year
YC91559	MGK	1119	0854508 BC Ltd - 100%.	7/3/2009	7/3/2010	1 year
YC91560	MGK	1120	0854508 BC Ltd - 100%.	7/3/2009	7/3/2010	1 year
YC91561	MGK	1121	0854508 BC Ltd - 100%.	7/3/2009	7/3/2010	1 year
YC91562	MGK	1122	Habanero Resources Inc. - 100%.	7/3/2009	7/3/2010	1 year
YC91563	MGK	1123	Habanero Resources Inc. - 100%.	7/3/2009	7/3/2010	1 year
YC91564	MGK	1124	Habanero Resources Inc. - 100%.	7/3/2009	7/3/2010	1 year
YC91565	MGK	1125	Habanero Resources Inc. - 100%.	7/3/2009	7/3/2010	1 year
YC91566	MGK	1126	Habanero Resources Inc. - 100%.	7/3/2009	7/3/2010	1 year
YC91567	MGK	1127	Habanero Resources Inc. - 100%.	7/3/2009	7/3/2010	1 year
YC91568	MGK	1128	0854511 BC Ltd. - 100%.	7/3/2009	7/3/2010	1 year
YC91569	MGK	1129	0854511 BC Ltd. - 100%.	7/3/2009	7/3/2010	1 year
YC91570	MGK	1130	0854511 BC Ltd. - 100%.	7/3/2009	7/3/2010	1 year
YC91571	MGK	1131	0854511 BC Ltd. - 100%.	7/3/2009	7/3/2010	1 year
YC91572	MGK	1132	0854511 BC Ltd. - 100%.	7/3/2009	7/3/2010	1 year
YC91573	MGK	1133	0854511 BC Ltd. - 100%.	7/3/2009	7/3/2010	1 year
YC91574	MGK	1134	MGK Consulting Inc. - 100%.	7/3/2009	7/3/2010	1 year
YC91575	MGK	1135	MGK Consulting Inc. - 100%.	7/3/2009	7/3/2010	1 year
YC91576	MGK	1136	MGK Consulting Inc. - 100%.	7/3/2009	7/3/2010	1 year
YC91577	MGK	1137	MGK Consulting Inc. - 100%.	7/3/2009	7/3/2010	1 year
YC91578	MGK	1138	MGK Consulting Inc. - 100%.	7/3/2009	7/3/2010	1 year
YC91579	MGK	1139	MGK Consulting Inc. - 100%.	7/3/2009	7/3/2010	1 year
YC91580	MGK	1140	MGK Consulting Inc. - 100%.	7/3/2009	7/3/2010	1 year
YC91581	MGK	1141	MGK Consulting Inc. - 100%.	7/3/2009	7/3/2010	1 year
YC91582	MGK	1142	MGK Consulting Inc. - 100%.	7/3/2009	7/3/2010	1 year
YC91583	MGK	1143	MGK Consulting Inc. - 100%.	7/3/2009	7/3/2010	1 year
YC91584	MGK	1144	MGK Consulting Inc. - 100%.	7/3/2009	7/3/2010	1 year
YC91585	MGK	1145	MGK Consulting Inc. - 100%.	7/3/2009	7/3/2010	1 year
YC91586	MGK	1146	MGK Consulting Inc. - 100%.	7/3/2009	7/3/2010	1 year
YC91587	MGK	1147	MGK Consulting Inc. - 100%.	7/3/2009	7/3/2010	1 year
YC91588	MGK	1148	MGK Consulting Inc. - 100%.	7/3/2009	7/3/2010	1 year
YC91589	MGK	1149	MGK Consulting Inc. - 100%.	7/3/2009	7/3/2010	1 year
YC91590	MGK	1150	MGK Consulting Inc. - 100%.	7/3/2009	7/3/2010	1 year
YC91591	MGK	1151	MGK Consulting Inc. - 100%.	7/3/2009	7/3/2010	1 year
YC91592	MGK	1152	MGK Consulting Inc. - 100%.	7/3/2009	7/3/2010	1 year
YC91593	MGK	1153	MGK Consulting Inc. - 100%.	7/3/2009	7/3/2010	1 year
YC91594	MGK	1154	0854508 BC Ltd - 100%.	7/3/2009	7/3/2010	1 year
YC91595	MGK	1155	0854508 BC Ltd - 100%.	7/3/2009	7/3/2010	1 year
YC91596	MGK	1156	0854508 BC Ltd - 100%.	7/3/2009	7/3/2010	1 year
YC91597	MGK	1157	0854508 BC Ltd - 100%.	7/3/2009	7/3/2010	1 year
YC91598	MGK	1158	0854508 BC Ltd - 100%.	7/3/2009	7/3/2010	1 year
YC91599	MGK	1159	0854508 BC Ltd - 100%.	7/3/2009	7/3/2010	1 year
YC91600	MGK	1160	0854508 BC Ltd - 100%.	7/3/2009	7/3/2010	1 year
YC91601	MGK	1161	0854508 BC Ltd - 100%.	7/3/2009	7/3/2010	1 year
YC91602	MGK	1162	0854508 BC Ltd - 100%.	7/3/2009	7/3/2010	1 year
YC91603	MGK	1163	0854508 BC Ltd - 100%.	7/3/2009	7/3/2010	1 year
YC91604	MGK	1164	0854511 BC Ltd. - 100%.	7/3/2009	7/3/2010	1 year
YC91605	MGK	1165	0854511 BC Ltd. - 100%.	7/3/2009	7/3/2010	1 year
YC91606	MGK	1166	0854511 BC Ltd. - 100%.	7/3/2009	7/3/2010	1 year
YC91607	MGK	1167	0854511 BC Ltd. - 100%.	7/3/2009	7/3/2010	1 year
YC91608	MGK	1168	0854511 BC Ltd. - 100%.	7/3/2009	7/3/2010	1 year

East Block Assessment

GrantNum	ClaimName	ClaimNbr	ClaimOwner	RecordDate	ClaimExpiryDate	Renewal Period
YC91609	MGK	1169	0854511 BC Ltd. - 100%.	7/3/2009	7/3/2010	1 year
YC91610	MGK	1170	MGK Consulting Inc. - 100%.	7/3/2009	7/3/2010	1 year
YC91611	MGK	1171	MGK Consulting Inc. - 100%.	7/3/2009	7/3/2010	1 year
YC91612	MGK	1172	MGK Consulting Inc. - 100%.	7/3/2009	7/3/2010	1 year
YC91613	MGK	1173	MGK Consulting Inc. - 100%.	7/3/2009	7/3/2010	1 year
YC91614	MGK	1174	MGK Consulting Inc. - 100%.	7/3/2009	7/3/2010	1 year
YC91615	MGK	1175	MGK Consulting Inc. - 100%.	7/3/2009	7/3/2010	1 year
YC91616	MGK	1176	MGK Consulting Inc. - 100%.	7/3/2009	7/3/2010	1 year
YC91617	MGK	1177	MGK Consulting Inc. - 100%.	7/3/2009	7/3/2010	1 year
YC91618	MGK	1178	MGK Consulting Inc. - 100%.	7/3/2009	7/3/2010	1 year
YC91619	MGK	1179	MGK Consulting Inc. - 100%.	7/3/2009	7/3/2010	1 year
YC91620	MGK	1180	MGK Consulting Inc. - 100%.	7/3/2009	7/3/2010	1 year
YC91621	MGK	1181	MGK Consulting Inc. - 100%.	7/3/2009	7/3/2010	1 year
YC91622	MGK	1182	MGK Consulting Inc. - 100%.	7/3/2009	7/3/2010	1 year
YC91623	MGK	1183	MGK Consulting Inc. - 100%.	7/3/2009	7/3/2010	1 year
YC91624	MGK	1184	MGK Consulting Inc. - 100%.	7/3/2009	7/3/2010	1 year
YC91625	MGK	1185	MGK Consulting Inc. - 100%.	7/3/2009	7/3/2010	1 year
YC91626	MGK	1186	MGK Consulting Inc. - 100%.	7/3/2009	7/3/2010	1 year
YC91627	MGK	1187	MGK Consulting Inc. - 100%.	7/3/2009	7/3/2010	1 year
YC91628	MGK	1188	MGK Consulting Inc. - 100%.	7/3/2009	7/3/2010	1 year
YC91629	MGK	1189	MGK Consulting Inc. - 100%.	7/3/2009	7/3/2010	1 year
YC91630	MGK	1190	0854508 BC Ltd - 100%.	7/3/2009	7/3/2010	1 year
YC91631	MGK	1191	0854508 BC Ltd - 100%.	7/3/2009	7/3/2010	1 year
YC91632	MGK	1192	0854508 BC Ltd - 100%.	7/3/2009	7/3/2010	1 year
YC91633	MGK	1193	0854508 BC Ltd - 100%.	7/3/2009	7/3/2010	1 year
YC91634	MGK	1194	0854508 BC Ltd - 100%.	7/3/2009	7/3/2010	1 year
YC91635	MGK	1195	0854508 BC Ltd - 100%.	7/3/2009	7/3/2010	1 year
YC91636	MGK	1196	0854508 BC Ltd - 100%.	7/3/2009	7/3/2010	1 year
YC91637	MGK	1197	0854508 BC Ltd - 100%.	7/3/2009	7/3/2010	1 year
YC91638	MGK	1198	0854508 BC Ltd - 100%.	7/3/2009	7/3/2010	1 year
YC91639	MGK	1199	0854508 BC Ltd - 100%.	7/3/2009	7/3/2010	1 year
YC91640	MGK	1200	0854511 BC Ltd. - 100%.	7/3/2009	7/3/2010	1 year
YC91641	MGK	1201	0854511 BC Ltd. - 100%.	7/3/2009	7/3/2010	1 year
YC91642	MGK	1202	0854511 BC Ltd. - 100%.	7/3/2009	7/3/2010	1 year
YC91643	MGK	1203	0854511 BC Ltd. - 100%.	7/3/2009	7/3/2010	1 year
YC91644	MGK	1204	0854511 BC Ltd. - 100%.	7/3/2009	7/3/2010	1 year
YC91645	MGK	1205	0854511 BC Ltd. - 100%.	7/3/2009	7/3/2010	1 year
YC91646	MGK	1206	MGK Consulting Inc. - 100%.	7/3/2009	7/3/2010	1 year
YC91647	MGK	1207	Rostock Ventures Corp - 100%.	7/3/2009	7/3/2010	1 year
YC91648	MGK	1208	MGK Consulting Inc. - 100%.	7/3/2009	7/3/2010	1 year
YC91649	MGK	1209	Rostock Ventures Corp - 100%.	7/3/2009	7/3/2010	1 year
YC91650	MGK	1210	MGK Consulting Inc. - 100%.	7/3/2009	7/3/2010	1 year
YC91651	MGK	1211	Rostock Ventures Corp - 100%.	7/3/2009	7/3/2010	1 year
YC91652	MGK	1212	MGK Consulting Inc. - 100%.	7/3/2009	7/3/2010	1 year
YC91653	MGK	1213	Rostock Ventures Corp - 100%.	7/3/2009	7/3/2010	1 year
YC91654	MGK	1214	MGK Consulting Inc. - 100%.	7/3/2009	7/3/2010	1 year
YC91655	MGK	1215	Rostock Ventures Corp - 100%.	7/3/2009	7/3/2010	1 year
YC91656	MGK	1216	MGK Consulting Inc. - 100%.	7/3/2009	7/3/2010	1 year
YC91657	MGK	1217	Rostock Ventures Corp - 100%.	7/3/2009	7/3/2010	1 year
YC91658	MGK	1218	MGK Consulting Inc. - 100%.	7/3/2009	7/3/2010	1 year
YC91659	MGK	1219	Rostock Ventures Corp - 100%.	7/3/2009	7/3/2010	1 year
YC91660	MGK	1220	MGK Consulting Inc. - 100%.	7/3/2009	7/3/2010	1 year
YC91661	MGK	1221	Rostock Ventures Corp - 100%.	7/3/2009	7/3/2010	1 year
YC91662	MGK	1222	MGK Consulting Inc. - 100%.	7/3/2009	7/3/2010	1 year

East Block Assessment

GrantNum	ClaimName	ClaimNbr	ClaimOwner	RecordDate	ClaimExpiryDate	Renewal Period
YC91663	MGK	1223	Rostock Ventures Corp - 100%.	7/3/2009	7/3/2010	1 year
YC91664	MGK	1224	MGK Consulting Inc. - 100%.	7/3/2009	7/3/2010	1 year
YC91665	MGK	1225	Rostock Ventures Corp - 100%.	7/3/2009	7/3/2010	1 year
YC91666	MGK	1226	0854508 BC Ltd - 100%.	7/3/2009	7/3/2010	1 year
YC91667	MGK	1227	0854508 BC Ltd - 100%.	7/3/2009	7/3/2010	1 year
YC91668	MGK	1228	0854508 BC Ltd - 100%.	7/3/2009	7/3/2010	1 year
YC91669	MGK	1229	0854508 BC Ltd - 100%.	7/3/2009	7/3/2010	1 year
YC91670	MGK	1230	0854508 BC Ltd - 100%.	7/3/2009	7/3/2010	1 year
YC91671	MGK	1231	0854508 BC Ltd - 100%.	7/3/2009	7/3/2010	1 year
YC91672	MGK	1232	0854508 BC Ltd - 100%.	7/3/2009	7/3/2010	1 year
YC91673	MGK	1233	0854508 BC Ltd - 100%.	7/3/2009	7/3/2010	1 year
YC91674	MGK	1234	0854508 BC Ltd - 100%.	7/3/2009	7/3/2010	1 year
YC91675	MGK	1235	0854508 BC Ltd - 100%.	7/3/2009	7/3/2010	1 year
YC91676	MGK	1236	0854511 BC Ltd. - 100%.	7/3/2009	7/3/2010	1 year
YC91677	MGK	1237	0854511 BC Ltd. - 100%.	7/3/2009	7/3/2010	1 year
YC91678	MGK	1238	0854511 BC Ltd. - 100%.	7/3/2009	7/3/2010	1 year
YC91679	MGK	1239	0854511 BC Ltd. - 100%.	7/3/2009	7/3/2010	1 year
YC91680	MGK	1240	0854511 BC Ltd. - 100%.	7/3/2009	7/3/2010	1 year
YC91681	MGK	1241	0854511 BC Ltd. - 100%.	7/3/2009	7/3/2010	1 year
YC91682	MGK	1242	Rostock Ventures Corp - 100%.	7/3/2009	7/3/2010	1 year
YC91683	MGK	1243	Rostock Ventures Corp - 100%.	7/3/2009	7/3/2010	1 year
YC91684	MGK	1244	Rostock Ventures Corp - 100%.	7/3/2009	7/3/2010	1 year
YC91685	MGK	1245	Rostock Ventures Corp - 100%.	7/3/2009	7/3/2010	1 year
YC91686	MGK	1246	Rostock Ventures Corp - 100%.	7/3/2009	7/3/2010	1 year
YC91687	MGK	1247	Rostock Ventures Corp - 100%.	7/3/2009	7/3/2010	1 year
YC91688	MGK	1248	Rostock Ventures Corp - 100%.	7/3/2009	7/3/2010	1 year
YC91689	MGK	1249	Rostock Ventures Corp - 100%.	7/3/2009	7/3/2010	1 year
YC91690	MGK	1250	Rostock Ventures Corp - 100%.	7/3/2009	7/3/2010	1 year
YC91691	MGK	1251	Rostock Ventures Corp - 100%.	7/3/2009	7/3/2010	1 year
YC91692	MGK	1252	Rostock Ventures Corp - 100%.	7/3/2009	7/3/2010	1 year
YC91693	MGK	1253	Rostock Ventures Corp - 100%.	7/3/2009	7/3/2010	1 year
YC91694	MGK	1254	Rostock Ventures Corp - 100%.	7/3/2009	7/3/2010	1 year
YC91695	MGK	1255	Rostock Ventures Corp - 100%.	7/3/2009	7/3/2010	1 year
YC91696	MGK	1256	Rostock Ventures Corp - 100%.	7/3/2009	7/3/2010	1 year
YC91697	MGK	1257	Rostock Ventures Corp - 100%.	7/3/2009	7/3/2010	1 year
YC91698	MGK	1258	Rostock Ventures Corp - 100%.	7/3/2009	7/3/2010	1 year
YC91699	MGK	1259	Rostock Ventures Corp - 100%.	7/3/2009	7/3/2010	1 year
YC91700	MGK	1260	Rostock Ventures Corp - 100%.	7/3/2009	7/3/2010	1 year
YC91701	MGK	1261	Rostock Ventures Corp - 100%.	7/3/2009	7/3/2010	1 year
YC91702	MGK	1262	0854508 BC Ltd - 100%.	7/3/2009	7/3/2010	1 year
YC91703	MGK	1263	0854508 BC Ltd - 100%.	7/3/2009	7/3/2010	1 year
YC91704	MGK	1264	0854508 BC Ltd - 100%.	7/3/2009	7/3/2010	1 year
YC91705	MGK	1265	0854508 BC Ltd - 100%.	7/3/2009	7/3/2010	1 year
YC91706	MGK	1266	0854508 BC Ltd - 100%.	7/3/2009	7/3/2010	1 year
YC91707	MGK	1267	0854508 BC Ltd - 100%.	7/3/2009	7/3/2010	1 year
YC91708	MGK	1268	0854508 BC Ltd - 100%.	7/3/2009	7/3/2010	1 year
YC91709	MGK	1269	0854508 BC Ltd - 100%.	7/3/2009	7/3/2010	1 year
YC91710	MGK	1270	0854508 BC Ltd - 100%.	7/3/2009	7/3/2010	1 year
YC91711	MGK	1271	0854508 BC Ltd - 100%.	7/3/2009	7/3/2010	1 year
YC91712	MGK	1272	0854511 BC Ltd. - 100%.	7/3/2009	7/3/2010	1 year
YC91713	MGK	1273	0854511 BC Ltd. - 100%.	7/3/2009	7/3/2010	1 year
YC91714	MGK	1274	0854511 BC Ltd. - 100%.	7/3/2009	7/3/2010	1 year
YC91715	MGK	1275	0854511 BC Ltd. - 100%.	7/3/2009	7/3/2010	1 year
YC91716	MGK	1276	0854511 BC Ltd. - 100%.	7/3/2009	7/3/2010	1 year

East Block Assessment

GrantNum	ClaimName	ClaimNbr	ClaimOwner	RecordDate	ClaimExpiryDate	Renewal Period
YC91717	MGK	1277	0854511 BC Ltd. - 100%.	7/3/2009	7/3/2010	1 year
YC91718	MGK	1278	Rostock Ventures Corp - 100%.	7/3/2009	7/3/2010	1 year
YC91719	MGK	1279	Rostock Ventures Corp - 100%.	7/3/2009	7/3/2010	1 year
YC91720	MGK	1280	Rostock Ventures Corp - 100%.	7/3/2009	7/3/2010	1 year
YC91721	MGK	1281	Rostock Ventures Corp - 100%.	7/3/2009	7/3/2010	1 year
YC91722	MGK	1282	Rostock Ventures Corp - 100%.	7/3/2009	7/3/2010	1 year
YC91723	MGK	1283	Rostock Ventures Corp - 100%.	7/3/2009	7/3/2010	1 year
YC91724	MGK	1284	Rostock Ventures Corp - 100%.	7/3/2009	7/3/2010	1 year
YC91725	MGK	1285	Rostock Ventures Corp - 100%.	7/3/2009	7/3/2010	1 year
YC91726	MGK	1286	Rostock Ventures Corp - 100%.	7/3/2009	7/3/2010	1 year
YC91727	MGK	1287	Rostock Ventures Corp - 100%.	7/3/2009	7/3/2010	1 year
YC91728	MGK	1288	Rostock Ventures Corp - 100%.	7/3/2009	7/3/2010	1 year
YC91729	MGK	1289	Rostock Ventures Corp - 100%.	7/3/2009	7/3/2010	1 year
YC91730	MGK	1290	Rostock Ventures Corp - 100%.	7/3/2009	7/3/2010	1 year
YC91731	MGK	1291	Rostock Ventures Corp - 100%.	7/3/2009	7/3/2010	1 year
YC91732	MGK	1292	Rostock Ventures Corp - 100%.	7/3/2009	7/3/2010	1 year
YC91733	MGK	1293	Rostock Ventures Corp - 100%.	7/3/2009	7/3/2010	1 year
YC91734	MGK	1294	Rostock Ventures Corp - 100%.	7/3/2009	7/3/2010	1 year
YC91735	MGK	1295	Rostock Ventures Corp - 100%.	7/3/2009	7/3/2010	1 year
YC91736	MGK	1296	Rostock Ventures Corp - 100%.	7/3/2009	7/3/2010	1 year
YC91737	MGK	1297	Rostock Ventures Corp - 100%.	7/3/2009	7/3/2010	1 year
YC91738	MGK	1298	0854508 BC Ltd - 100%.	7/3/2009	7/3/2010	1 year
YC91739	MGK	1299	0854508 BC Ltd - 100%.	7/3/2009	7/3/2010	1 year
YC91740	MGK	1300	0854508 BC Ltd - 100%.	7/3/2009	7/3/2010	1 year
YC91741	MGK	1301	0854508 BC Ltd - 100%.	7/3/2009	7/3/2010	1 year
YC91742	MGK	1302	0854508 BC Ltd - 100%.	7/3/2009	7/3/2010	1 year
YC91743	MGK	1303	0854508 BC Ltd - 100%.	7/3/2009	7/3/2010	1 year
YC91744	MGK	1304	0854508 BC Ltd - 100%.	7/3/2009	7/3/2010	1 year
YC91745	MGK	1305	0854508 BC Ltd - 100%.	7/3/2009	7/3/2010	1 year
YC91746	MGK	1306	0854508 BC Ltd - 100%.	7/3/2009	7/3/2010	1 year
YC91747	MGK	1307	0854508 BC Ltd - 100%.	7/3/2009	7/3/2010	1 year
YC91748	MGK	1308	0854511 BC Ltd. - 100%.	7/3/2009	7/3/2010	1 year
YC91749	MGK	1309	0854511 BC Ltd. - 100%.	7/3/2009	7/3/2010	1 year
YC91750	MGK	1310	0854511 BC Ltd. - 100%.	7/3/2009	7/3/2010	1 year
YC91751	MGK	1311	0854511 BC Ltd. - 100%.	7/3/2009	7/3/2010	1 year
YC91752	MGK	1312	0854511 BC Ltd. - 100%.	7/3/2009	7/3/2010	1 year
YC91753	MGK	1313	0854511 BC Ltd. - 100%.	7/3/2009	7/3/2010	1 year
YC91754	MGK	1314	Rostock Ventures Corp - 100%.	7/3/2009	7/3/2010	1 year
YC91755	MGK	1315	Rostock Ventures Corp - 100%.	7/3/2009	7/3/2010	1 year
YC91757	MGK	1317	Rostock Ventures Corp - 100%.	7/3/2009	7/3/2010	1 year
YC91758	MGK	1318	Rostock Ventures Corp - 100%.	7/3/2009	7/3/2010	1 year
YC91759	MGK	1319	Rostock Ventures Corp - 100%.	7/3/2009	7/3/2010	1 year
YC91760	MGK	1320	Rostock Ventures Corp - 100%.	7/3/2009	7/3/2010	1 year
YC91761	MGK	1321	Rostock Ventures Corp - 100%.	7/3/2009	7/3/2010	1 year
YC91762	MGK	1322	Rostock Ventures Corp - 100%.	7/3/2009	7/3/2010	1 year
YC91763	MGK	1323	Rostock Ventures Corp - 100%.	7/3/2009	7/3/2010	1 year
YC91776	MGK	1336	0854508 BC Ltd - 100%.	7/3/2009	7/3/2010	1 year
YC91777	MGK	1337	0854508 BC Ltd - 100%.	7/3/2009	7/3/2010	1 year
YC91778	MGK	1338	0854508 BC Ltd - 100%.	7/3/2009	7/3/2010	1 year
YC91779	MGK	1339	0854508 BC Ltd - 100%.	7/3/2009	7/3/2010	1 year
YC91780	MGK	1340	0854508 BC Ltd - 100%.	7/3/2009	7/3/2010	1 year
YC91781	MGK	1341	0854508 BC Ltd - 100%.	7/3/2009	7/3/2010	1 year
YC91782	MGK	1342	0854508 BC Ltd - 100%.	7/3/2009	7/3/2010	1 year
YC91783	MGK	1343	0854508 BC Ltd - 100%.	7/3/2009	7/3/2010	1 year

East Block Assessment

[illegible]

East Block Assessment

[illegible]

East Block Assessment

[illegible]

East Block Assessment

[illegible]

East Block Assessment

GrantNum	ClaimName	ClaimNbr	ClaimOwner	RecordDate	ClaimExpiryDate	Renewal Period
YD06134	MGK	914	Habanero Resources Inc. - 100%.	7/3/2009	7/3/2010	1 year
YD06135	MGK	915	Habanero Resources Inc. - 100%.	7/3/2009	7/3/2010	1 year
YD06136	MGK	916	Habanero Resources Inc. - 100%.	7/3/2009	7/3/2010	1 year
YD06137	MGK	917	Habanero Resources Inc. - 100%.	7/3/2009	7/3/2010	1 year
YD06138	MGK	918	Habanero Resources Inc. - 100%.	7/3/2009	7/3/2010	1 year
YD06139	MGK	919	Habanero Resources Inc. - 100%.	7/3/2009	7/3/2010	1 year
YD06140	MGK	920	Habanero Resources Inc. - 100%.	7/3/2009	7/3/2010	1 year
YD06141	MGK	921	Habanero Resources Inc. - 100%.	7/3/2009	7/3/2010	1 year
YD06142	MGK	922	Habanero Resources Inc. - 100%.	7/3/2009	7/3/2010	1 year
YD06143	MGK	923	Habanero Resources Inc. - 100%.	7/3/2009	7/3/2010	1 year
YD06144	MGK	924	Habanero Resources Inc. - 100%.	7/3/2009	7/3/2010	1 year
YD06145	MGK	925	Habanero Resources Inc. - 100%.	7/3/2009	7/3/2010	1 year
YD06366	MGK	926	0854511 BC Ltd. - 100%.	7/3/2009	7/3/2010	1 year
YD06367	MGK	927	0854511 BC Ltd. - 100%.	7/3/2009	7/3/2010	1 year
YD06368	MGK	928	0854511 BC Ltd. - 100%.	7/3/2009	7/3/2010	1 year
YD06369	MGK	929	0854511 BC Ltd. - 100%.	7/3/2009	7/3/2010	1 year
YD06370	MGK	930	0854511 BC Ltd. - 100%.	7/3/2009	7/3/2010	1 year
YD06371	MGK	931	0854511 BC Ltd. - 100%.	7/3/2009	7/3/2010	1 year
YD06372	MGK	932	0859842 BC Ltd. - 100%.	7/3/2009	7/3/2010	1 year
YD06373	MGK	933	0859842 BC Ltd. - 100%.	7/3/2009	7/3/2010	1 year
YD06374	MGK	934	0859842 BC Ltd. - 100%.	7/3/2009	7/3/2010	1 year
YD06375	MGK	935	0859842 BC Ltd. - 100%.	7/3/2009	7/3/2010	1 year
YD06376	MGK	936	0859842 BC Ltd. - 100%.	7/3/2009	7/3/2010	1 year
YD06377	MGK	937	0859842 BC Ltd. - 100%.	7/3/2009	7/3/2010	1 year
YD06378	MGK	938	0859842 BC Ltd. - 100%.	7/3/2009	7/3/2010	1 year
YD06379	MGK	939	0859842 BC Ltd. - 100%.	7/3/2009	7/3/2010	1 year
YD06380	MGK	940	0854508 BC Ltd. - 100%.	7/3/2009	7/3/2010	1 year
YD06381	MGK	941	0854508 BC Ltd. - 100%.	7/3/2009	7/3/2010	1 year
YD06382	MGK	942	0854511 BC Ltd. - 100%.	7/3/2009	7/3/2010	1 year
YD06383	MGK	943	0854511 BC Ltd. - 100%.	7/3/2009	7/3/2010	1 year
YD06384	MGK	944	0854511 BC Ltd. - 100%.	7/3/2009	7/3/2010	1 year
YD06385	MGK	945	0854511 BC Ltd. - 100%.	7/3/2009	7/3/2010	1 year
YD06386	MGK	946	0854511 BC Ltd. - 100%.	7/3/2009	7/3/2010	1 year
YD06387	MGK	947	0854511 BC Ltd. - 100%.	7/3/2009	7/3/2010	1 year
YD06388	MGK	948	0854511 BC Ltd. - 100%.	7/3/2009	7/3/2010	1 year
YD06389	MGK	949	0854511 BC Ltd. - 100%.	7/3/2009	7/3/2010	1 year
YD06390	MGK	950	0859842 BC Ltd. - 100%.	7/3/2009	7/3/2010	1 year
YD06391	MGK	951	0859842 BC Ltd. - 100%.	7/3/2009	7/3/2010	1 year
YD06392	MGK	952	0859842 BC Ltd. - 100%.	7/3/2009	7/3/2010	1 year
YD06393	MGK	953	0859842 BC Ltd. - 100%.	7/3/2009	7/3/2010	1 year
YD06394	MGK	954	0859842 BC Ltd. - 100%.	7/3/2009	7/3/2010	1 year
YD06395	MGK	955	0859842 BC Ltd. - 100%.	7/3/2009	7/3/2010	1 year
YD06396	MGK	956	0859842 BC Ltd. - 100%.	7/3/2009	7/3/2010	1 year
YD06397	MGK	957	0859842 BC Ltd. - 100%.	7/3/2009	7/3/2010	1 year
YD06398	MGK	958	0854511 BC Ltd. - 100%.	7/3/2009	7/3/2010	1 year
YD06399	MGK	959	0854511 BC Ltd. - 100%.	7/3/2009	7/3/2010	1 year
YD06400	MGK	960	0854511 BC Ltd. - 100%.	7/3/2009	7/3/2010	1 year
YD06401	MGK	961	0854511 BC Ltd. - 100%.	7/3/2009	7/3/2010	1 year
YD06402	MGK	962	0854511 BC Ltd. - 100%.	7/3/2009	7/3/2010	1 year
YD06403	MGK	963	0854511 BC Ltd. - 100%.	7/3/2009	7/3/2010	1 year
YD06404	MGK	964	0854511 BC Ltd. - 100%.	7/3/2009	7/3/2010	1 year
YD06405	MGK	965	0854511 BC Ltd. - 100%.	7/3/2009	7/3/2010	1 year
YD06406	MGK	966	0854511 BC Ltd. - 100%.	7/3/2009	7/3/2010	1 year
YD06407	MGK	967	0854511 BC Ltd. - 100%.	7/3/2009	7/3/2010	1 year

East Block Assessment

GrantNum	ClaimName	ClaimNbr	ClaimOwner	RecordDate	ClaimExpiryDate	Renewal Period
YD06408	MGK	968	0854511 BC Ltd. - 100%.	7/3/2009	7/3/2010	1 year
YD06409	MGK	969	0854511 BC Ltd. - 100%.	7/3/2009	7/3/2010	1 year
YD06410	MGK	970	0854511 BC Ltd. - 100%.	7/3/2009	7/3/2010	1 year
YD06411	MGK	971	0854511 BC Ltd. - 100%.	7/3/2009	7/3/2010	1 year
YD06412	MGK	972	0854511 BC Ltd. - 100%.	7/3/2009	7/3/2010	1 year
YD06413	MGK	973	0854511 BC Ltd. - 100%.	7/3/2009	7/3/2010	1 year
YD06414	MGK	974	0854511 BC Ltd. - 100%.	7/3/2009	7/3/2010	1 year
YD06415	MGK	975	0854511 BC Ltd. - 100%.	7/3/2009	7/3/2010	1 year
YD06416	MGK	976	0854511 BC Ltd. - 100%.	7/3/2009	7/3/2010	1 year
YD06417	MGK	977	0854511 BC Ltd. - 100%.	7/3/2009	7/3/2010	1 year
YD06418	MGK	978	0854511 BC Ltd. - 100%.	7/3/2009	7/3/2010	1 year
YD06419	MGK	979	0854511 BC Ltd. - 100%.	7/3/2009	7/3/2010	1 year
YD06420	MGK	980	0854511 BC Ltd. - 100%.	7/3/2009	7/3/2010	1 year
YD06421	MGK	981	0854511 BC Ltd. - 100%.	7/3/2009	7/3/2010	1 year
YD06422	MGK	982	0854511 BC Ltd. - 100%.	7/3/2009	7/3/2010	1 year
YD06423	MGK	983	0854511 BC Ltd. - 100%.	7/3/2009	7/3/2010	1 year
YD06424	MGK	984	0854511 BC Ltd. - 100%.	7/3/2009	7/3/2010	1 year
YD06425	MGK	985	0854511 BC Ltd. - 100%.	7/3/2009	7/3/2010	1 year
YD06426	MGK	986	0854511 BC Ltd. - 100%.	7/3/2009	7/3/2010	1 year
YD06427	MGK	987	0854511 BC Ltd. - 100%.	7/3/2009	7/3/2010	1 year
YD06428	MGK	988	0854511 BC Ltd. - 100%.	7/3/2009	7/3/2010	1 year
YD06429	MGK	989	0854511 BC Ltd. - 100%.	7/3/2009	7/3/2010	1 year
YD06430	MGK	990	0854511 BC Ltd. - 100%.	7/3/2009	7/3/2010	1 year
YD06431	MGK	991	0854511 BC Ltd. - 100%.	7/3/2009	7/3/2010	1 year
YD06432	MGK	992	0854511 BC Ltd. - 100%.	7/3/2009	7/3/2010	1 year
YD06433	MGK	993	0854511 BC Ltd. - 100%.	7/3/2009	7/3/2010	1 year
YD06434	MGK	994	0854511 BC Ltd. - 100%.	7/3/2009	7/3/2010	1 year
YD06435	MGK	995	0854511 BC Ltd. - 100%.	7/3/2009	7/3/2010	1 year
YD06436	MGK	996	0859842 BC Ltd. - 100%.	7/3/2009	7/3/2010	1 year
YD06437	MGK	997	0859842 BC Ltd. - 100%.	7/3/2009	7/3/2010	1 year
YD06438	MGK	998	0859842 BC Ltd. - 100%.	7/3/2009	7/3/2010	1 year
YD06439	MGK	999	0859842 BC Ltd. - 100%.	7/3/2009	7/3/2010	1 year
YD06440	MGK	1000	0859842 BC Ltd. - 100%.	7/3/2009	7/3/2010	1 year
YD06441	MGK	1001	0859842 BC Ltd. - 100%.	7/3/2009	7/3/2010	1 year
YD06442	MGK	1002	0859842 BC Ltd. - 100%.	7/3/2009	7/3/2010	1 year
YD06443	MGK	1003	0859842 BC Ltd. - 100%.	7/3/2009	7/3/2010	1 year
YD06444	MGK	1004	0859842 BC Ltd. - 100%.	7/3/2009	7/3/2010	1 year
YD06445	MGK	1005	0859842 BC Ltd. - 100%.	7/3/2009	7/3/2010	1 year
YD06446	MGK	1006	0859842 BC Ltd. - 100%.	7/3/2009	7/3/2010	1 year
YD06447	MGK	1007	0859842 BC Ltd. - 100%.	7/3/2009	7/3/2010	1 year
YD06448	MGK	1008	0859842 BC Ltd. - 100%.	7/3/2009	7/3/2010	1 year
YD06449	MGK	1009	0859842 BC Ltd. - 100%.	7/3/2009	7/3/2010	1 year
YD06450	MGK	1010	0859842 BC Ltd. - 100%.	7/3/2009	7/3/2010	1 year
YD06451	MGK	1011	0859842 BC Ltd. - 100%.	7/3/2009	7/3/2010	1 year
YD06452	MGK	1012	0854508 BC Ltd - 100%.	7/3/2009	7/3/2010	1 year
YD06453	MGK	1013	0854508 BC Ltd - 100%.	7/3/2009	7/3/2010	1 year
YD06454	MGK	1014	0854508 BC Ltd - 100%.	7/3/2009	7/3/2010	1 year
YD06455	MGK	1015	0854508 BC Ltd - 100%.	7/3/2009	7/3/2010	1 year
YD06456	MGK	1016	0854508 BC Ltd - 100%.	7/3/2009	7/3/2010	1 year
YD06457	MGK	1017	0854508 BC Ltd - 100%.	7/3/2009	7/3/2010	1 year
YD06458	MGK	1018	0854508 BC Ltd - 100%.	7/3/2009	7/3/2010	1 year
YD06459	MGK	1019	0854508 BC Ltd - 100%.	7/3/2009	7/3/2010	1 year
YD06460	MGK	1020	0859842 BC Ltd. - 100%.	7/3/2009	7/3/2010	1 year
YD06461	MGK	1021	0859842 BC Ltd. - 100%.	7/3/2009	7/3/2010	1 year

East Block Assessment

GrantNum	ClaimName	ClaimNbr	ClaimOwner	RecordDate	ClaimExpiryDate	Renewal Period
YD06462	MGK	1022	0854508 BC Ltd - 100%.	7/3/2009	7/3/2010	1 year
YD06463	MGK	1023	0854508 BC Ltd - 100%.	7/3/2009	7/3/2010	1 year
YD06464	MGK	1024	0854508 BC Ltd - 100%.	7/3/2009	7/3/2010	1 year
YD06465	MGK	1025	0854508 BC Ltd - 100%.	7/3/2009	7/3/2010	1 year
YD06466	MGK	1026	0854508 BC Ltd - 100%.	7/3/2009	7/3/2010	1 year
YD06467	MGK	1027	0854508 BC Ltd - 100%.	7/3/2009	7/3/2010	1 year
YD06468	MGK	1028	0854508 BC Ltd - 100%.	7/3/2009	7/3/2010	1 year
YD06469	MGK	1029	0854508 BC Ltd - 100%.	7/3/2009	7/3/2010	1 year
YD06470	MGK	1030	0854508 BC Ltd - 100%.	7/3/2009	7/3/2010	1 year
YD06471	MGK	1031	0854508 BC Ltd - 100%.	7/3/2009	7/3/2010	1 year
YD06472	MGK	1032	0859842 BC Ltd. - 100%.	7/3/2009	7/3/2010	1 year
YD06473	MGK	1033	0859842 BC Ltd. - 100%.	7/3/2009	7/3/2010	1 year
YD06474	MGK	1034	0854508 BC Ltd - 100%.	7/3/2009	7/3/2010	1 year
YD06475	MGK	1035	0854508 BC Ltd - 100%.	7/3/2009	7/3/2010	1 year
YD06476	MGK	1036	0854508 BC Ltd - 100%.	7/3/2009	7/3/2010	1 year
YD06477	MGK	1037	0854508 BC Ltd - 100%.	7/3/2009	7/3/2010	1 year
YD06478	MGK	1038	Habanero Resources Inc. - 100%.	7/3/2009	7/3/2010	1 year
YD06479	MGK	1039	Habanero Resources Inc. - 100%.	7/3/2009	7/3/2010	1 year
YD06480	MGK	1040	Habanero Resources Inc. - 100%.	7/3/2009	7/3/2010	1 year
YD06481	MGK	1041	Habanero Resources Inc. - 100%.	7/3/2009	7/3/2010	1 year
YD06482	MGK	1042	Habanero Resources Inc. - 100%.	7/3/2009	7/3/2010	1 year
YD06483	MGK	1043	Habanero Resources Inc. - 100%.	7/3/2009	7/3/2010	1 year
YD06484	MGK	1044	0859842 BC Ltd. - 100%.	7/3/2009	7/3/2010	1 year
YD06485	MGK	1045	0859842 BC Ltd. - 100%.	7/3/2009	7/3/2010	1 year
YD06486	MGK	1046	0854508 BC Ltd - 100%.	7/3/2009	7/3/2010	1 year
YD06487	MGK	1047	0854508 BC Ltd - 100%.	7/3/2009	7/3/2010	1 year
YD06488	MGK	1048	0854508 BC Ltd - 100%.	7/3/2009	7/3/2010	1 year
YD06489	MGK	1049	0854508 BC Ltd - 100%.	7/3/2009	7/3/2010	1 year
YD06490	MGK	1050	Habanero Resources Inc. - 100%.	7/3/2009	7/3/2010	1 year
YD06491	MGK	1051	Habanero Resources Inc. - 100%.	7/3/2009	7/3/2010	1 year
YD06492	MGK	1052	Habanero Resources Inc. - 100%.	7/3/2009	7/3/2010	1 year
YD06493	MGK	1053	Habanero Resources Inc. - 100%.	7/3/2009	7/3/2010	1 year
YD06494	MGK	1054	Habanero Resources Inc. - 100%.	7/3/2009	7/3/2010	1 year
YD06495	MGK	1055	Habanero Resources Inc. - 100%.	7/3/2009	7/3/2010	1 year
YD06496	MGK	1056	0854511 BC Ltd. - 100%.	7/3/2009	7/3/2010	1 year
YD06497	MGK	1057	0854511 BC Ltd. - 100%.	7/3/2009	7/3/2010	1 year
YD06498	MGK	1058	0854511 BC Ltd. - 100%.	7/3/2009	7/3/2010	1 year
YD06499	MGK	1059	0854511 BC Ltd. - 100%.	7/3/2009	7/3/2010	1 year
YD06500	MGK	1060	0854511 BC Ltd. - 100%.	7/3/2009	7/3/2010	1 year

QUARTZ MINING ACT FORM 12 SECTION 55
APPLICATION TO GROUP MINERAL CLAIMS

Dawson.

MINING DISTRICT

Office Date Stamp

West Block

I, (We) the undersigned owners or agent(s) of the owners of following mineral claims.

(Additional sheets or an appendix may be used) (Claim names and grant numbers to be listed in sequence eg. TOM 1-40, YC10001 - YC10040)

GRANT NUMBER	CLAIM NAME	MAP SHEET
YC99241-362	MGK 501-622	115 N/1

Give notice of intention to group the said claims for the performance of work and do hereby apply under the provisions of section 55 of the *Quartz Mining Act* for a certificate in form 6.

I (We) hereby certify that the above claims are adjoining as shown on the attached sketch

Dated at Vancouver

This 14 day of December, 2009

Applicant(s)

Access to Information and Protection of Privacy Act

The personal information requested on this form is collected under the authority of and used for the purpose of administering the *Quartz Mining Act*.

Questions about the collection and use of this information can be directed to the Mining Records Office, Mineral Resources, Department of Energy, Mines and Resources, Yukon Government, Box 2703, Whitehorse, Yukon Territory, Y1A 2C6 (867) 667-3190

APPLICATION TO GROUP MINERAL CLAIMS

Whitehorse

MINING DISTRICT

Office Date Stamp

East Block

I, (We) the undersigned owners or agent(s) of the owners of following mineral claims.

(Additional sheets or an appendix may be used) (Claim names and grant numbers to be listed in sequence eg. TOM 1-40, YC10001 - YC10040)

GRANT NUMBER	CLAIM NAME	MAP SHEET
YC91501-91755	MGK 1061-1315	1150/4
YC91757-91763	MGK 1317-1323	
YC91776-91785	MGK 1336-1345	
YC99060-99240	MGK 700-880	
YD06101-06550	MGK 881-1060	

Give notice of intention to group the said claims for the performance of work and do hereby apply under the provisions of section 55 of the *Quartz Mining Act* for a certificate in form 6.

I (We) hereby certify that the above claims are adjoining as shown on the attached sketch

Dated at Vancouver

This 14 day of December, 2009

Applicant(s)

Access to Information and Protection of Privacy Act

The personal information requested on this form is collected under the authority of and used for the purpose of administering the *Quartz Mining Act*. Questions about the collection and use of this information can be directed to the Mining Records Office, Mineral Resources, Department of Energy, Mines and Resources, Yukon Government, Box 2703, Whitehorse, Yukon Territory, Y1A 2C6 (867) 667-3190

QUARTZ MINING ACT FORM 12 SECTION 55
APPLICATION TO GROUP MINERAL CLAIMS

Whitehorse

MINING DISTRICT

Office Date Stamp

Central Block

I, (We) the undersigned owners or agent(s) of the owners of following mineral claims.

(Additional sheets or an appendix may be used) (Claim names and grant numbers to be listed in sequence eg. TOM 1-40, YC10001 - YC10040)

GRANT NUMBER	CLAIM NAME	MAP SHEET
YC98501-600	MGK 1-100	1150/4
YC98931-99053	MGK 101-223	1150/4

Give notice of intention to group the said claims for the performance of work and do hereby apply under the provisions of section 55 of the *Quartz Mining Act* for a certificate in form 6.

I (We) hereby certify that the above claims are adjoining as shown on the attached sketch

Dated at Vancouver

This 14 day of December, 2009

Applicant(s)

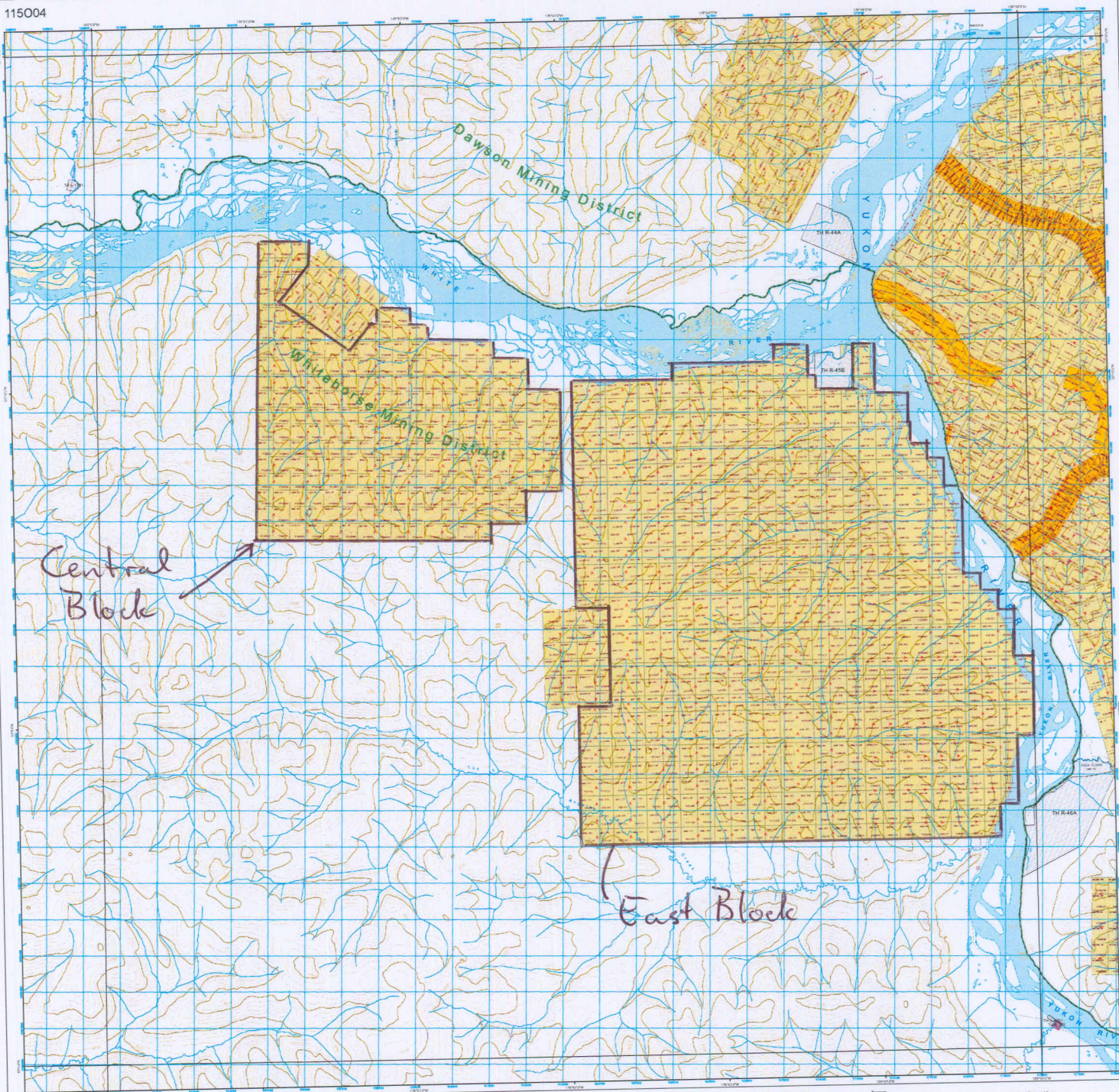
Access to Information and Protection of Privacy Act

The personal information requested on this form is collected under the authority of and used for the purpose of administering the *Quartz Mining Act*.

Questions about the collection and use of this information can be directed to the Mining Records Office, Mineral Resources, Department of Energy, Mines and Resources, Yukon Government, Box 2703, Whitehorse, Yukon Territory, Y1A 2C6 (867) 667-3190

115004

115004



- Mining**
- Placer mineral claims
 - Unsurveyed mineral claims
 - Mineral reserves
 - Active
 - Expired
 - Surplus
- Quartz mineral claims**
- Location line direction
 - Active
 - Expired
 - Surplus
- Coal Tenure**
- Exploration tenure
 - Mining lease
 - Expired
- Administrative boundaries**
- Province
 - County
 - Mineral district
 - Parks and protected areas
 - Not shown from mining claims
 - First Nations unceded lands
 - Unceded lands from mining claims
 - First Nations settlement lands
 - Unceded
 - First Nations settlement lands
 - Unceded
 - First Nations settlement lands
 - Unceded
 - First Nations settlement lands
 - Unceded
- Land Tenure**
- Land application
 - Active
 - Expired
 - Land disposition
 - Agreement for sale
 - Exemption
 - Land use application
 - Lease
 - License
 - Reserve
 - Other
 - Agricultural Land
 - Aggregation
 - Deposition
 - Legal survey
 - Transfer
 - Land parcel
- Base map features**
- Neighbourhood
 - Loc covered lines
 - Topographic
 - Contour line interval 100 feet
 - Contour line interval 200 feet
 - Hydrographic
 - Watercourse
 - Sea and dry river bed
 - Wetland
 - Transportation routes
 - Roadway
 - Main
 - Secondary
 - Trail
 - Canal
 - Water
 - Industry
 - Party route

115004
MINING CLAIMS

District: Dawson, Yukon
Date: Oct 30, 2009



115008	115009	115010
115011	115012	115013
115014	115015	115016

District Office Contact

Dawson District Office
200-100-1000
PO Box 1000
Dawson, Yukon
Y1A 0A6
Tel: (867) 943-2000
Fax: (867) 943-2001
Email: dawson@yukon.ca

Whitehorse District Office
200-100-1000
PO Box 1000
Whitehorse, Yukon
Y1A 0A6
Tel: (867) 943-2000
Fax: (867) 943-2001
Email: whitehorse@yukon.ca

Yukon District Office
200-100-1000
PO Box 1000
Yukon, Yukon
Y1A 0A6
Tel: (867) 943-2000
Fax: (867) 943-2001
Email: yukon@yukon.ca

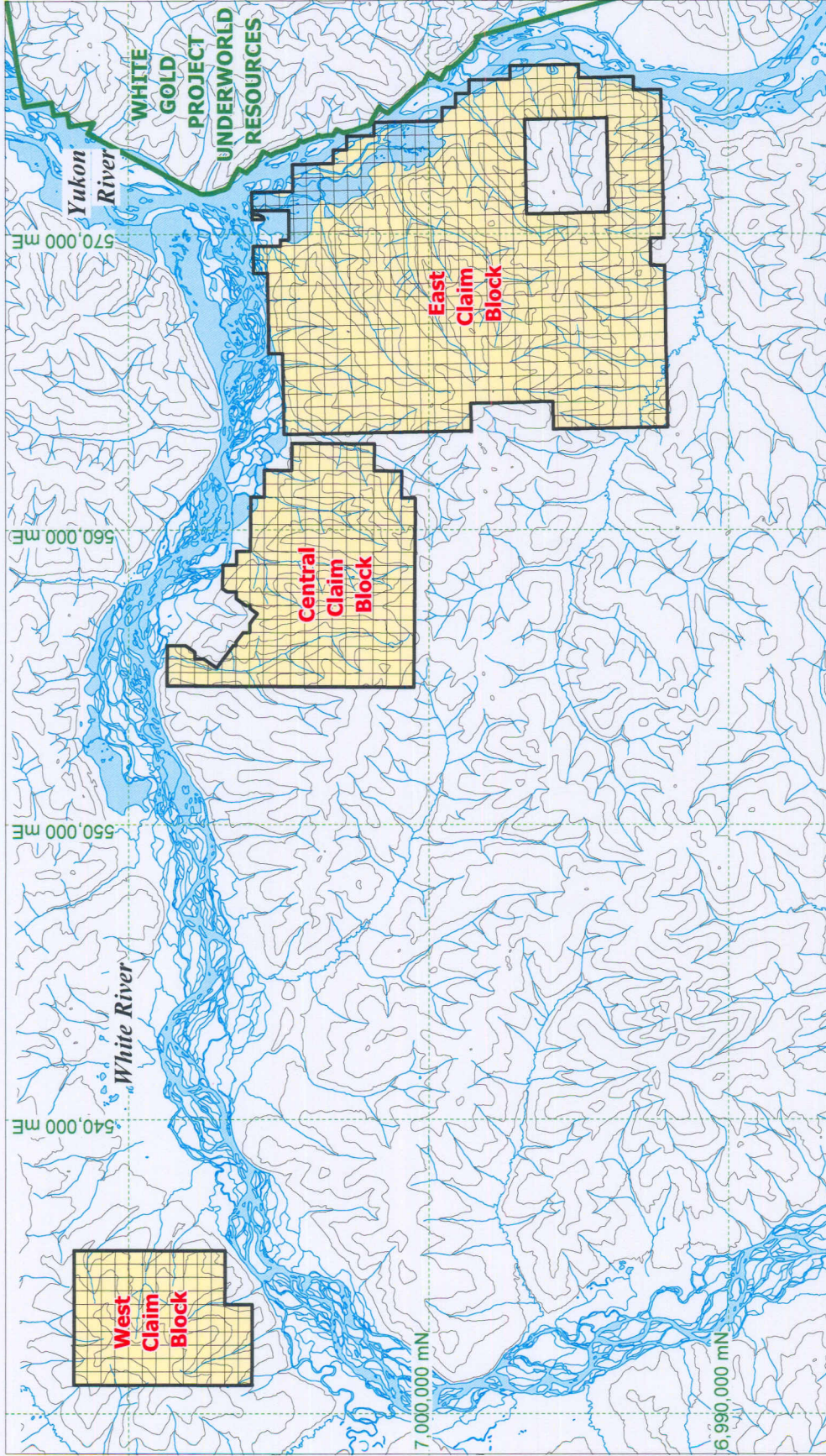
Yukon District Office
200-100-1000
PO Box 1000
Yukon, Yukon
Y1A 0A6
Tel: (867) 943-2000
Fax: (867) 943-2001
Email: yukon@yukon.ca

Yukon District Office
200-100-1000
PO Box 1000
Yukon, Yukon
Y1A 0A6
Tel: (867) 943-2000
Fax: (867) 943-2001
Email: yukon@yukon.ca

Yukon District Office
200-100-1000
PO Box 1000
Yukon, Yukon
Y1A 0A6
Tel: (867) 943-2000
Fax: (867) 943-2001
Email: yukon@yukon.ca

Yukon District Office
200-100-1000
PO Box 1000
Yukon, Yukon
Y1A 0A6
Tel: (867) 943-2000
Fax: (867) 943-2001
Email: yukon@yukon.ca

Grouping sketch



0 km 20 km

Habanero Resources Inc.

Yukon Gold Project

Tenure Map



Date:	NOV 2009	Scale:	1:200,000	Figure	2
U.T.M. Zone:	UTM 7 - NAD83	Mining District:	DAWSON		
N.T.S. 15N/01	1150/04	Province:	BC, Yukon		